



Bird's Bush News 25.03.22

We Love Maths!

<https://www.birdsbush.staffs.sch.uk/mathematics/>

At Bird's Bush, we believe mathematics is an important part of children's development throughout school, right from an early age. Our aim is for all children to think mathematically, enabling them to reason and solve problems effectively- experiencing a sense of awe and wonder as they solve a problem for the first time, discover different solutions and make connections between different areas of mathematics.

To support your child with their maths at home, please visit our new website! You'll find lots of helpful information, websites and even YouTube links to show how we teach maths in school.

We Maths

Parent Consultation Evenings



It was lovely to see so many parents celebrating learning with us at Parent Consultation meetings this week. Thank you for helping us to continue some of our protective measures by waiting outside, especially those of you with later appointments on Wednesday as it was getting a bit chilly and dark!

If you were not able to attend this week, please contact the class teacher via email to arrange a meeting.

Looking towards EASTER!



We will be having an Easter Raffle this term, digital tickets are £1 and can be bought on Parent Pay or by sending money in a named envelope which can be handed to the adult on the gate. The raffle will be drawn on **Friday 8th April**. We have some amazing prizes already and will be having a **Non Uniform day** on **Friday 1st April** for you to send in a donation of **chocolate** if you are able to.

This year we are bringing back our traditional Easter Bonnet Parade for Lower School (Reception, Y1, Y2 & Y3). Children are invited to create their Easter Bonnet at home and bring it into school on **Friday 8th April**. We will then have a parade around the playgrounds (hopefully! depending on the weather) at 1pm. Parents and friends are welcome to come and watch.

For Upper School (Y4, Y5 & Y6) we invite children to enter our Decorated Egg competition by bringing in their decorated egg on **Thursday 7th April**. If using a real egg, please make sure the inside is blown out or it is very hard boiled no more than a week before it comes into school - we really want to avoid the smell of rotting eggs!! You could also use a polystyrene or plastic egg if you wish. We love the creativity of our children but ask that, if you are creating a scene with your egg it must be NO bigger than a shoebox as we don't have the space.

Our catering staff would also like to invite all of the children to send in an Easter picture of their choice which they have decorated themselves by **Thursday 7th April**. Prizes will be given in each year group.

Parking near to schools - Message from the Highways team.



We recognise that school related parking can create pressures on communities but we also understand that there will always be some parents that need to park within a reasonable distance from schools.

This is a complex topic and not one that is easily resolved. Our [road safety education officers](#) may already be liaising with the school or headteacher in order to promote road safety awareness regarding parking with the parents and children.

Occasionally head teachers may write to parents reminding them to park responsibly, so it is always worth voicing your concerns through discussion with the school. Where private driveways are being obstructed or existing parking restrictions such as double yellow lines are being ignored, these problems may be resolved through routine or ad hoc enforcement.

We can carry out enforcement where parking restrictions exist and can also address the blocking of pedestrian/disabled dropped kerb crossing points and dropped kerb vehicle access crossings. If restrictions exist, please [let us know online](#). If there are no restrictions in place and there are issues of vehicles parked dangerously, then this is a matter for the police. The police can also address offences of wilful and unnecessary obstruction of the road or footway, the blocking of pedestrian/disabled crossing points, obstruction of vehicle access crossings, dangerous parking on pedestrian crossing zig-zag markings and issues of double parking or parking too close to a junction.

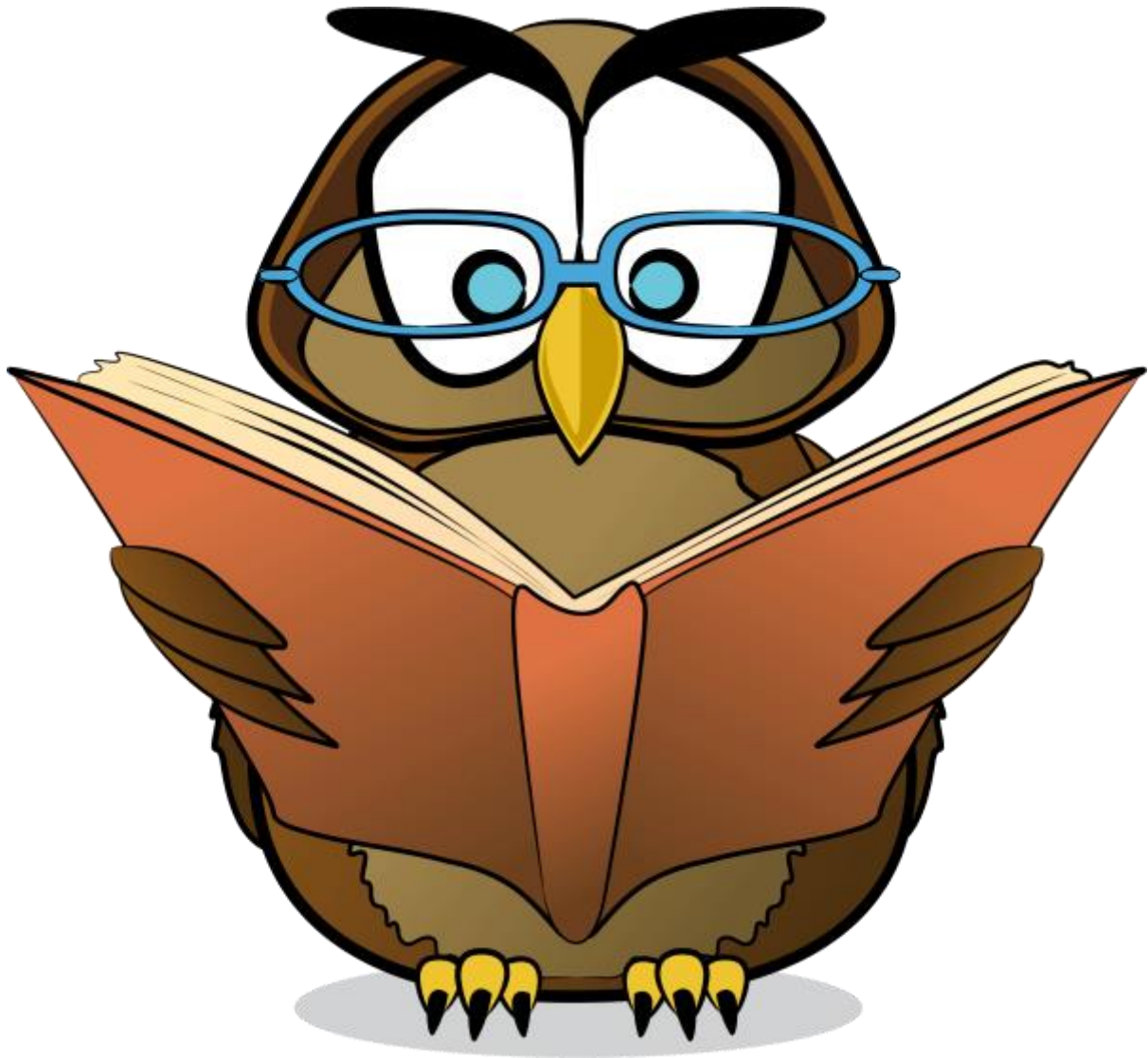
When addressed by the police, these offences may be subject to an immediate fixed penalty notice. The police can be contacted on their non-emergency number [101](#). If you have tried all of the above and are still experiencing problems, it may be possible for us to consider implementing a new, or revising an existing parking restriction, please [request this through Report It](#). Select to report a new fault, select 'other road issues' and then select the problem parking icon to submit a request to the local community highways team.



Champions 25.3.22

Finley C	3 3C	Never Gave Up	Finley has tried really hard this week not to give up on his learning. He has edited his writing with Miss C and has tried hard to solve some tricky maths too! Never stop believing in yourself!
Sophia-Louise	2 2F	Motivation	Sophia has been motivated this week sharing wonderful ideas through her reading and writing skills. Well done!
Lexie Rose	6 6J	Independence	Lexie has been very independent in her learning this week, doing revision at home to help her with her learning. As well as going home to do some amazing independent learning in RE! Keep up the good work!
Alfie	4 4G	Motivation	Alfie has shown a vast improvement in his motivation this week, he is showing excellent learning behaviours and is a super star. Well done Alfie.
Harvey	5 5H	Independence	Harvey has been working hard to improve his Maths this week and can even explain to his friends! Well done Harvey.
Chase	1 1D	Organised	Always helping to organise the classroom and independently staying organised
Poppy	Reception RS	Confidence	Poppy was confident enough to write her own instructions for planting seeds in independent learning!

READ-IT WINNERS



Reception - Connie

Y1 - Ethan

Y2 - Isabelle S

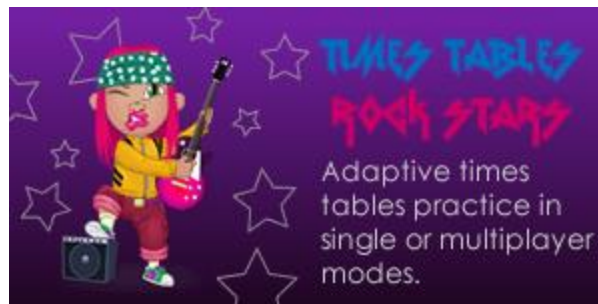
Y3 - Lacie

Y4 - Lizzie

Y5 - Bradley

Y6 - Ellie

TTRS & Numberbots winners



Y1 - Eloise

Y2 - Isabelle S

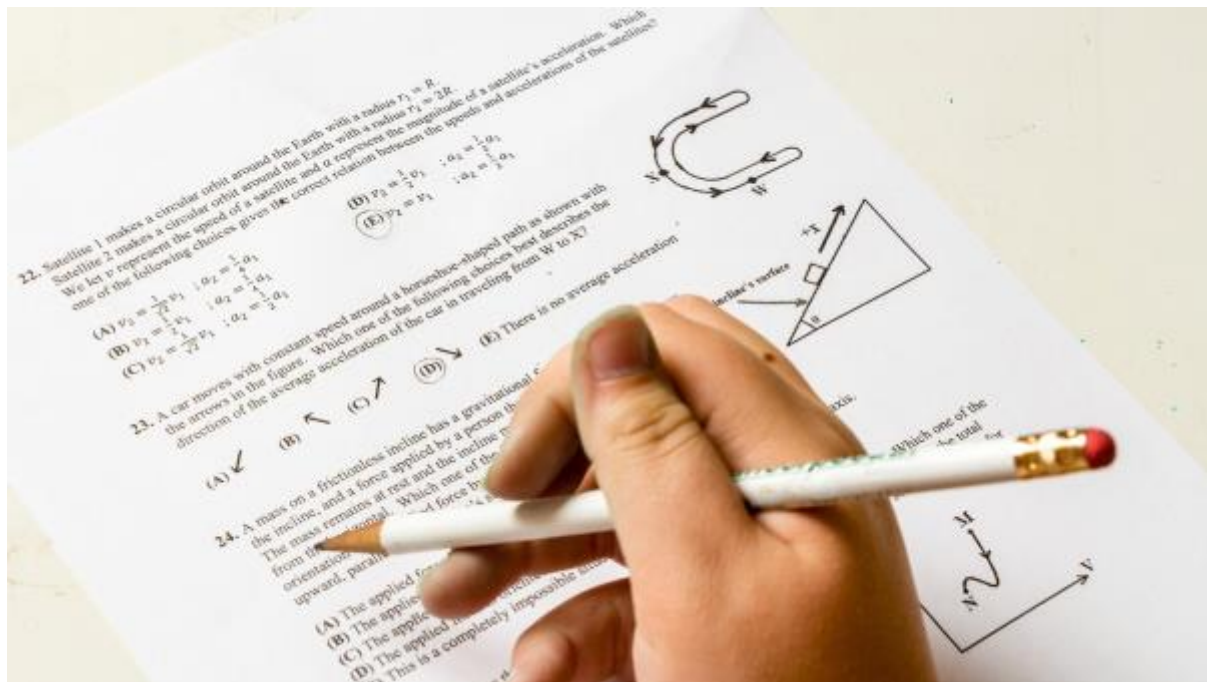
Y3 - Olivia

Y4 - Jayden

Y5 - Ruby

Y6 - Tia

Homework prize draw



Reception - Nate

Y1 - Noah V

Y2 - Reggie

Y3 - Lucy

Y4 - Ava

Y5 - Georgie & Annabelle

Y6 - Tayla



Wearing school uniform encourages a shared belonging to our school and creates equality for pupils. Please try to send children in school uniform as much as possible. We are still asking that children wear their PE kit on days when they have PE - again, we ask that children wear the correct PE kit:

- Plain Black/navy joggers, shorts or plain black leggings
- Trainers for outdoor PE
- Plain white or pale blue T-shirt

They can have a plain black/navy sweatshirt for outdoor PE or they can wear their Bird's Bush sweatshirt if it's cold.

NO JEWELLERY is allowed for PE - earrings must be removed (easier to take them out at home) and we are not allowed for them to be covered with tape or plasters due to health and safety concerns.

NO MAKE UP, NAIL VARNISH (including acrylic nails) or UNNATURAL HAIR COLOUR is acceptable in school.



Denese Hill - Family Support Worker

Denese is available for help and support about all sorts of matters - not just school related stuff! Just drop her an email and she will be in touch. d.hill@perryhallmat.co.uk

Official Facebook Group for Parents

[Click here to join the group](#)

Please remember that Denese no longer is a member of the other Facebook group so cannot help or advise with any posts put on that one. If you have an issue or concern, please contact us directly so we can help sort it out with you.

CLASS EMAILS

eyfs@perryhallmat.co.uk

bb.y1@perryhallmat.co.uk

bb.y2@perryhallmat.co.uk

bb.y3@perryhallmat.co.uk

bb.y4@perryhallmat.co.uk

bb.y5@perryhallmat.co.uk

bb.y6@perryhallmat.co.uk

d.hill@perryhallmat.co.uk

s.office@perryhallmat.co.uk

The school office is open from 8.30am - 4.00pm Monday, Tuesday, Wednesday. 8.45am - 3.30pm Thursday and 8.30am - 4.00pm Friday.

THE ANSWER PHONE WILL BE ON DURING LUNCHTIMES - please leave a message, at times there is no one in the office so your call cannot be answered even if you keep ringing us.

Please email us or leave a message on the answerphone and we will get back to you.

Spring Term 2022

- **Term Time:** Monday 28th February 2022 to Friday 8th April 2022
- **EASTER HOLIDAY 9TH APRIL - 24TH APRIL**

Summer Term 2022

- **Term Time:** Monday 25th April 2022 to Friday 27th May 2022
- **Half term:** Monday 30th May 2022 to Friday 3rd June 2022
- **Term Time:** Monday 6th June 2022 to Wednesday 20th July 2022
- **Bank Holiday Monday 2nd May**
- **STAFF TRAINING DAY - THURSDAY 21st JULY**
- **JUBILEE BANK HOLIDAY DAY (in lieu of May) - FRIDAY 22nd JULY**

Apologies for the changes again, back to the original plan! School will be open as normal on 17th June.

LAST DAY FOR CHILDREN WEDNESDAY 20th July