



14.01.22

## 14.01.22 - Bird's Bush News



### Spring 1

Thank you for your understanding and support with our heating difficulties on Wednesday. We were determined to keep school open and the children who came into school were absolutely fine with an extra layer - Year 3 thought it was great fun keeping their coats, hats and gloves on! The plumbers were able to get the heating on by lunchtime but hadn't been able to fix the automatic timers or thermostat that caused it to break so we kept the heating on overnight to make sure it was okay on Thursday - in fact, it was a bit of a sauna in some rooms! It's been fixed today so fingers crossed we are all sorted again.

Children have enjoyed the "Stunning Starts" to their new learning for this term. It is wonderful to see their reactions and see the interest ignite inside.

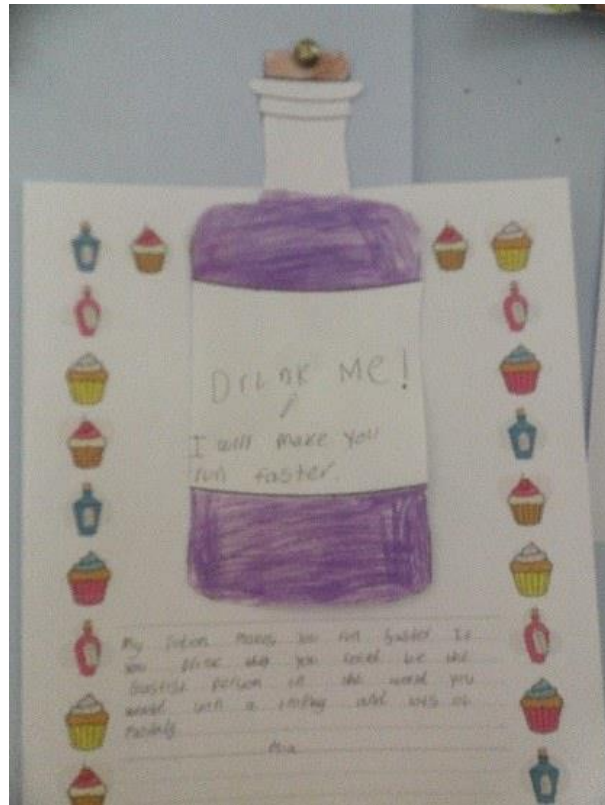


1 - Reception CSI



In Year 4 our Stunningstart was to make potions linked to our text Alice in Wonderland. We thought about what we would like to be able to do, be smart, run fast and teleport were the most popular options!







## COVID

We are trying our best to minimise the impact of Covid in school. All staff are testing at least twice a week and in classes where cases are increasing we have moved to daily lateral flow testing. Since coming back after Christmas, we have had 6 staff and 12 children with confirmed cases of Covid -

this is more than we have recorded since the start of the pandemic. Please keep testing to keep everyone safe - supply of lateral flow test kits is getting back to normal again so you should be able to order kits or collect them from local stores. Remote learning is ready on Purple Mash if children need to isolate or test positive.

Today we had to combine Year 1 and 2 as we were unable to cover both classes. We want to avoid having to close classes as much as possible. Our contingency strategy includes using our experienced HLTA/TAs to cover classes or combining groups or classes to work together. If the number of staff absences becomes a risk to safety we will have no other option but to close some classes and move to remote learning again. Fingers crossed we won't get there!

Miss Francis, Mrs Holmes and Miss Harper (new y1 teacher) are all out of isolation this weekend so, as long as they are feeling well enough, they will be back in on Monday. Miss Harper will be in y1 all week as Mrs Meah will be isolating.

### **Parent Questionnaire - Please fill it in by Monday**

We have sent out the link to our annual feedback questionnaire, thank you for those who have already completed it. We use the information collected to help us improve so welcome your responses. The form can be accessed on this link.

[Parent Questionnaire](#)

### **Y6 Residential visit 24th January - Laches Wood**

We ask that children have a Lateral Flow Test on the Monday morning of the visit, before coming to school. Anyone with a positive result will not be able to take part. If anyone develops symptoms while at Laches Wood we will contact you for permission for them to administer a lateral flow test (nasal swab only).

If you choose that your child no longer will attend, we are unable to refund any money as all places have been booked and paid for.

If you have any questions, please contact Miss Johnson or Mrs Gould using the Y6 email address.



Our school is part of a MAT - a Multi Academy Trust. This means that we are part of a group of schools that are led and managed by a Trust Board separate to the Local Authority where a school is based.

Our Trust currently has 9 primary schools as part of the 'family' and we are also supporting 4 other schools who might join us next year.

We are proud to be part of Perry Hall Multi Academy Trust (PHMAT). It has helped us on our improvement Journey in many, many ways. We are expecting a visit from inspectors this term (we were due last July but Covid has delayed everything) and we are determined to show off all of the amazing learning experiences the children have at school everyday.

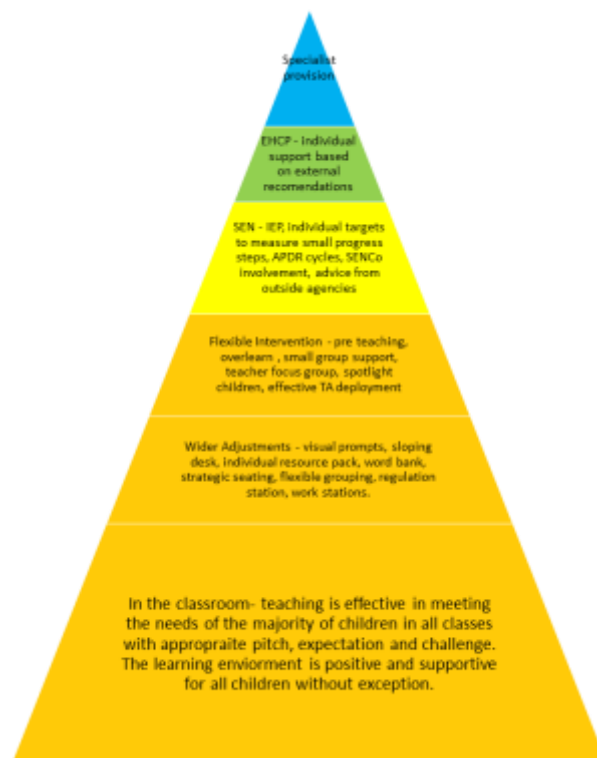
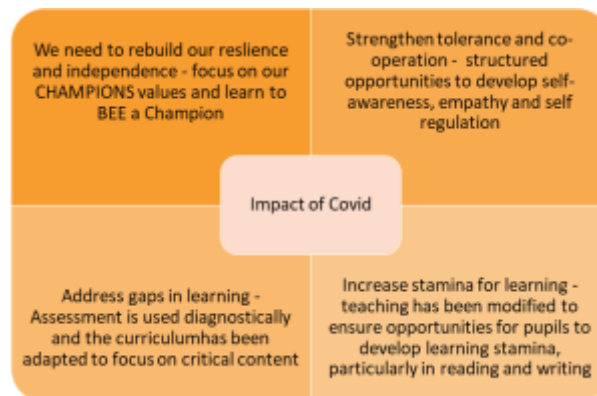
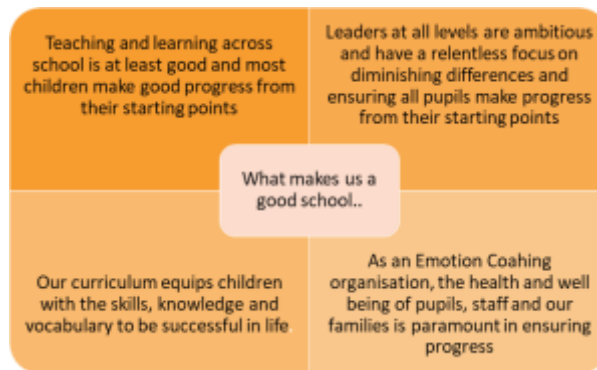
If you want to learn more about PHMAT please look on the website - it has links to all of the schools too!

[Perry Hall Multi Academy Trust Website](#)



## School Priorities 2021/2022





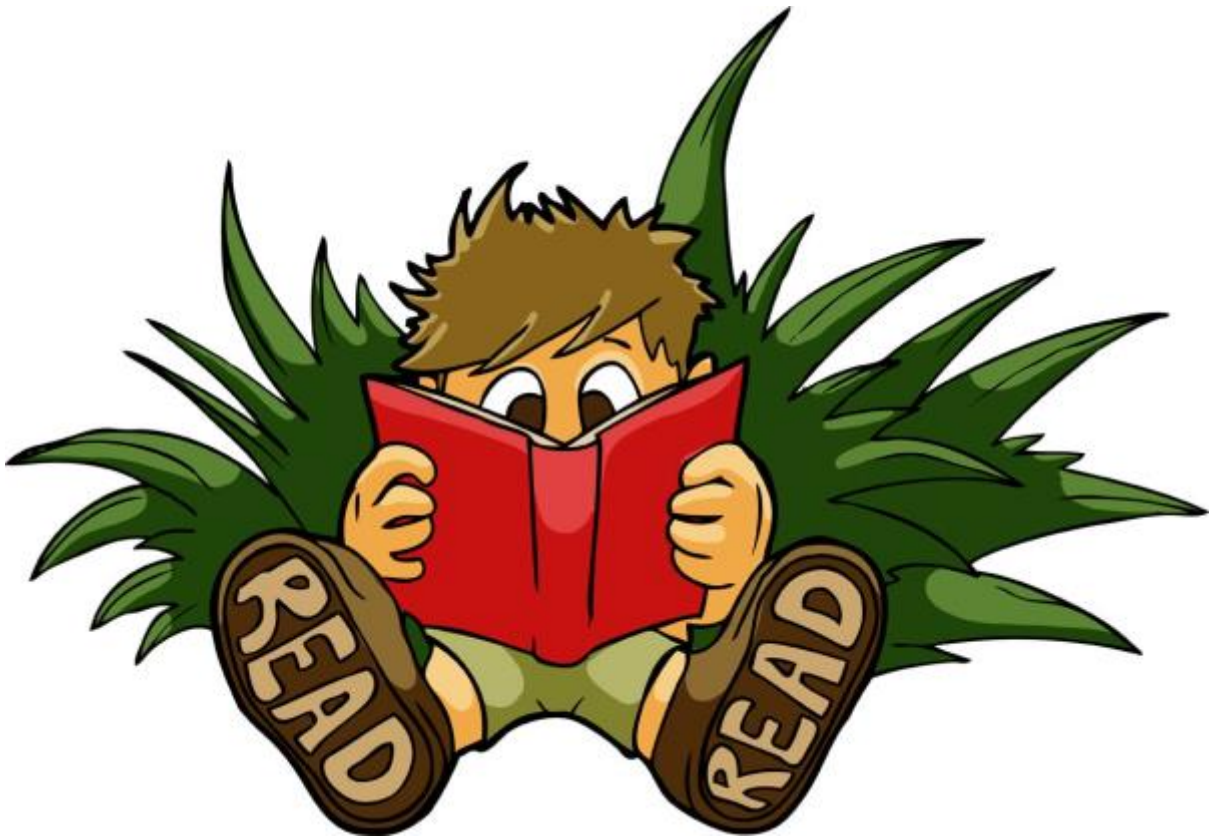
We have regular monitoring visits and meetings with the executive team and specialist leaders from the trust to ensure we are doing everything we can to support our pupils and enable them to make progress.

On Tuesday Amarjit Cheema (CEO) and Darryl Asbury (Exec head of standards) came into school to see how we are doing, some of the points from their report are:



- *It is evident from the learning walk conducted with the Headteacher that the school has well established routines that enable the pupils to settle into their work quickly in the morning. They have adapted the start of the day to meet the needs of some cohorts e.g. in year 4 they start with a mathematics lesson as the pupils in this cohort enjoy mathematics.*
- *Staff are deployed well to meet the individual and group needs of the pupils. This support ensures that the pupils make progress during the lesson*
- *The pupils have strong learning attitudes and where pupils struggle to do so, adults quickly ensure that they are engaged. The pupils that do struggle are in the main, pupils with particular needs.*
- *Lessons are well planned.*
- *It is evident that work is well matched to the individual needs of the pupils. Pupils are expected to work within their age-related band and access to achieving this is done through support and some modification to the work.*
- *There is clear evidence of progress in books from pupil's individual starting points.*
- *The strong inclusion team (HT, SENCO, FSW and Support staff lead), is a real strength of the school that has supported the development of an inclusive provision.*

## 'Read it' Winners this week



Reception - Violet

Year 1 - Zachary C

Year 2 - Isabelle S

Year 3 - Lexi-Rose T

Year 4 - Kyran

Year 5 - Archie S

Year 6 - Maddison W

## Numberbots and Times Table Rock Stars!



Year 1 - Macey

Year 2 - Ellie W

Year 3 - Dylan B

Year 4 - Harrison

Year 5 - Oliver

Year 6 - Madison B

BIRD'S BUSH CHAMPIONS!



## Champions 14.01.22

|          |           |              |              |   |
|----------|-----------|--------------|--------------|---|
| Isabelle | Thompson  | 3 3C         | Safe         | Isabelle has been an excellent learning buddy this week, supporting her friends with their learning. She is a absolute BB star!                                       |
| Zachary  | Harris    | 5 5H         | Pride        | Zachary has tried really hard to work towards his targets this week. He has shown a real maturity in the way he can discuss his feelings with adults. Well done Zach! |
| Katie    | Growcott  | 2 2F         | Motivation   | Katie has shown great motivation in the TT Rockstar challenge this week   |
| Rowan    | Griffiths | 4 4G         | Organised    | Rowan is amazingly organised. He helps those around him to be ready for learning and is always on task. Good job!   |
| Chloe    | Blount    | 6 6J         | Ambition     | Chloe has shown an amazing attitude to learning all week and showed lots of enthusiasm and independence in Maths this week. Keep up the good work!                    |
| Noah     | Halifax   | 1 1D         | Independence | Noah used his independent skills to write a brilliant lost poster. He even proofread and corrected his own errors! Good job Noah.                                     |
| Bella    | Johnson   | Reception RS | Motivation   | Bella has been trying very hard in phonics this week. She has retained lots of sounds and is beginning to blend. Go Bella!  |



**2 - Denese Hill - Family Support Worker**

*Denese is available for help and support during this time. Just drop her an email and she will be in touch.  
[d.hill@perryhallmat.co.uk](mailto:d.hill@perryhallmat.co.uk)*

Official Facebook Group for Parents

[Click here to join the group](#)

Please remember that Denese no longer is a member of the other Facebook group so cannot help or advise with any posts put on that one. If you have an issue or concern, please contact us directly so we can help sort it out with you.



*3 - Vote for our Sensory Room project*

Fazeley Express   Shenstone Express   Amington Express   Dosthill Express   Lichfield Extra

To vote, you will need to make a purchase within store of any value. You will receive one token per transaction and it's not necessary to purchase a carrier bag in order to receive a token.

**If you, or anyone you know, shops in any of these Tesco stores - please ask them to vote for us!**

Ways to contact us -



[eyfs@perryhallmat.co.uk](mailto:eyfs@perryhallmat.co.uk)

[bb.y1@perryhallmat.co.uk](mailto:bb.y1@perryhallmat.co.uk)

[bb.y2@perryhallmat.co.uk](mailto:bb.y2@perryhallmat.co.uk)

[bb.y3@perryhallmat.co.uk](mailto:bb.y3@perryhallmat.co.uk)

[bb.y4@perryhallmat.co.uk](mailto:bb.y4@perryhallmat.co.uk)

[bb.y5@perryhallmat.co.uk](mailto:bb.y5@perryhallmat.co.uk)

[bb.y6@perryhallmat.co.uk](mailto:bb.y6@perryhallmat.co.uk)

[d.hill@perryhallmat.co.uk](mailto:d.hill@perryhallmat.co.uk)

[s.office@perryhallmat.co.uk](mailto:s.office@perryhallmat.co.uk)

The school office is open from 8.30am - 4.00pm Monday, Tuesday, Wednesday. 8.45am - 3.30pm Thursday and 8.30am - 4.00pm Friday.

Please email us or leave a message on the answerphone and we will get back to you.

## Term Dates for 2021-2022

### Spring Term 2022

- **Term Time:** Wednesday 5th January 2022 to Friday 18th February 2022
- **Half term:** Monday 21st February 2022 to Friday 25th February 2022
- **Term Time:** Monday 28th February 2022 to Friday 8th April 2022

### Summer Term 2022

- **Term Time:** Monday 25th April 2022 to Friday 27th May 2022
- **Half term:** Monday 30th May 2022 to Friday 3rd June 2022
- **Term Time:** Monday 6th June 2022 to Thursday 21st July 2022
- **STAFF TRAINING DAY:** Friday 22 July 2022